

shree  
**TRIDEV** **R**infra

# kashi gateways



WHERE LEGACY RISES TO THE SKYLINE



TRIDEV <sup>shree</sup> Infra  
**kashi**   
**gateways**

Project Overview	4
Towers at a Glance	6
Site Plan	8
Tower Plan	9
Unit Plans	10
Features	16
Amenities	18
Brief Specifications	22
Gallery	24
Location	26



## Welcome to Kashi Gateways

Nestled in a serene yet connected corner of Varanasi, Kashi Gateways rises as a beacon of contemporary living. With two majestic towers, refined architecture, and unmatched amenities, this address is designed for those who seek elegance, comfort, and a life above the ordinary.



## PROJECT OVERVIEW

**UPRERAPRJ468361/09/2025**

**[www.up-rera.in/projects](http://www.up-rera.in/projects)**

**Account Name:** R G INFRA VENTURES PRIVATE LIMITED COLL AC KASHI GATEWAYS

**Collection Bank Name:** Union Bank of India

**Address:** 867, Nai Basti, Bechupur, District Chandauli

**Account Number:** 363501010282851

**IFSC Code:** UBIN0536351

*Note: Home buyers should deposit money / installments / home loan installments into Collection Account only.*





WHERE  
LEGACY RISES  
TO THE  
SKYLINE

## Grace in Structure. Grandeur in Vision.

Kashi Gateways rises with quiet confidence - a residential landmark that offers more than just homes. It offers a lifestyle of elevated calm, intelligent design, and enduring strength. This prestigious development features premium tower, rising G+17 floors into the sky. With thoughtfully planned residences on each floor, the tower is designed to maintain privacy, natural light, and cross-ventilation - ensuring a balanced, peaceful life for every resident. This project comprises a curated mix of 2 and 3 BHK units, ranging from Standard layouts to Premium configurations. Whether you're seeking a cozy, efficient space or a sprawling premium residence, the offerings here are tailored for both style and functionality.

### Project Composition

- Elegant Tower
- Ground + 17 Floors
- 6 Apartments Per Floor
- 2 & 3 BHK Homes
- Contemporary Facade & Elevation Design
- Earthquake-Resistant RCC Framed Structure
- Secure Gated Community with Access Control
- High-Speed Elevators & Grand Entrance Lobbies
- Vastu-Conscious Planning



## LEGEND

- 1. Guard Room
- 2. Nature Park
- 3. Kids Play Area
- 4. Yoga Garden
- 5. Temple
- 6. Club House
- 7. Green Area
- 8. Ramp Below
- 9. Parking
- 10. Rear Entry

## KASHI GATEWAYS SITE PLAN



## KASHI GATEWAYS TOWER PLAN

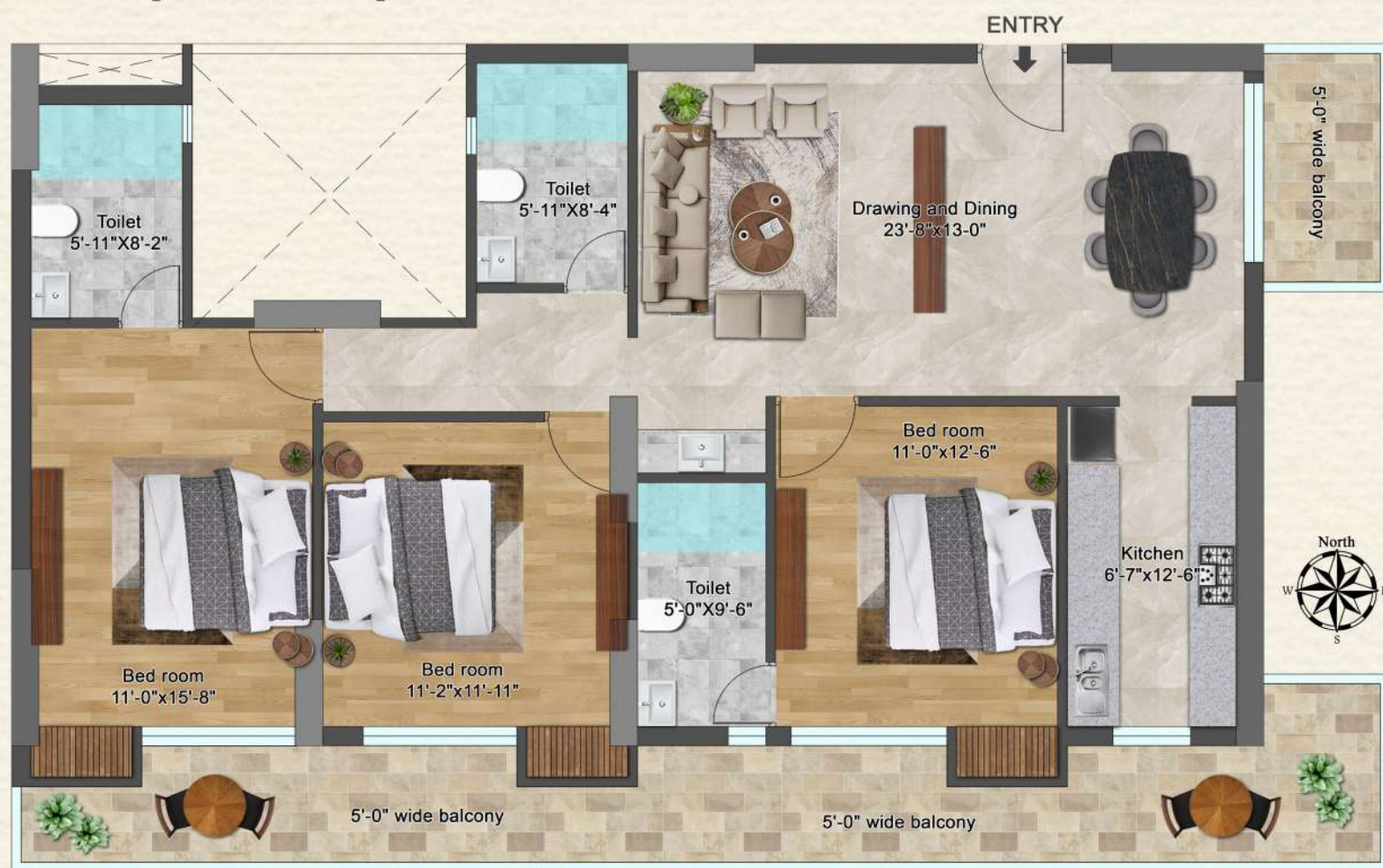




## UNIT 1 FLOOR PLAN

### 3 BHK

Super Built up Area: 1945 sq.ft.  
Built up Area: 1497.1 sq.ft.  
Carpet Area: 1091 sq.ft.



### KEY PLAN



## UNIT 2 FLOOR PLAN

### 2 BHK

Super Built up Area: 1565 sq.ft.  
Built up Area: 1202.7 sq.ft.  
Carpet Area: 930 sq.ft.



### KEY PLAN





## UNIT 3 FLOOR PLAN

### 3 BHK

Super Built up Area: 2025 sq.ft.  
Built up Area: 1558.2 sq.ft.  
Carpet Area: 1159.7 sq.ft.



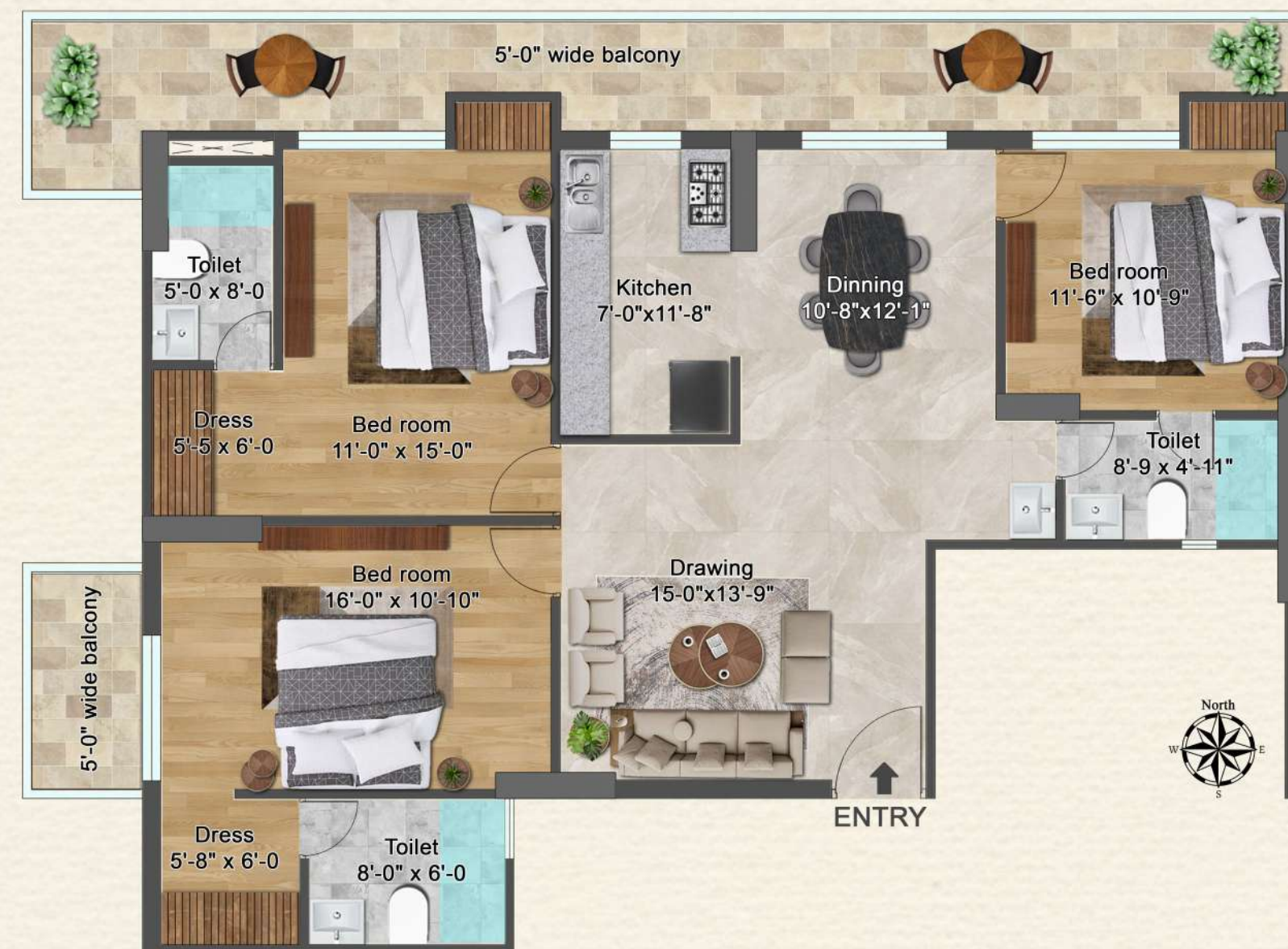
### KEY PLAN



## UNIT 4 FLOOR PLAN

### 3 BHK

Super Built up Area: 2015 sq.ft.  
Built up Area: 1549.9 sq.ft.  
Carpet Area: 1147 sq.ft.



### KEY PLAN





## UNIT 5 FLOOR PLAN

### 2 BHK

Super Built up Area: 1540 sq.ft.  
Built up Area: 1184.1 sq.ft.  
Carpet Area: 828.4 sq.ft.



KEY PLAN



## UNIT 6 FLOOR PLAN

### 3 BHK

Super Built up Area: 1985 sq.ft.  
Built up Area: 1525.7 sq.ft.  
Carpet Area: 1039.9 sq.ft.



KEY PLAN





## KASHI GATEWAYS

### KEY FEATURES

- Integrated community of 2BHK & 3BHK Flats
- Wide Range of Spacious and well ventilated flats.
- Designer Gate & Boundary walled Complex
- Designer External Lighting
- Vastu compliance layout
- Automated Passenger Elevator with premium finished lobby
- Additionally 01 large sized Service Lift
- Brick batcoba treatment on terrace
- More than 65% open space
- Ample parking space at stilt, basement & open
- Visitor's Car Parking
- Spacious apartments with modern finishing
- Prime location with easy access to amenities
- Modern amenities for a luxurious lifestyle
- 24/7 security and CCTV surveillance
- Two layer Gated Society
- Anti-termite treatment
- Rain Water Harvesting
- 24 hr Power Back –up in common areas
- Intercom Facility within the Complex including Security Gate
- Earthquake Resistant RCC Frame Structure
- Design as per Seismic Zone
- Sewage treatment plant
- VDA approved & RERA registered project.

STATE OF ART AMENITIES  
GRAND LANDSCAPES



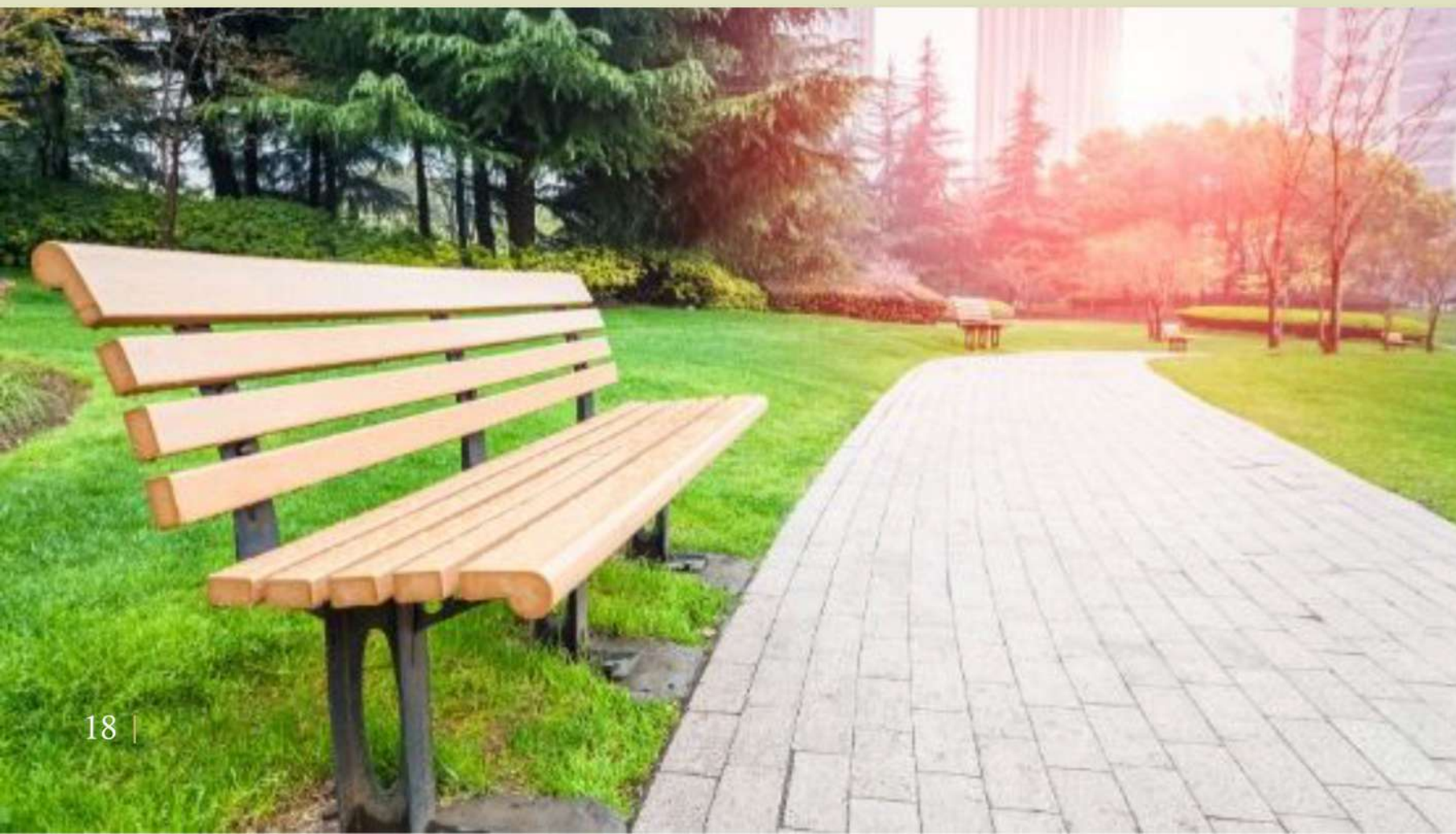
Greenspaces Designed for Harmony

- Manicured green spaces
- Modern Benches and seating
- Nature Park
- Walking paths with lights
- Yoga Garden
- Shaded seating

STATE OF ART AMENITIES  
KIDS PLAY AREA

Where Childhood Comes to Life

- Safe softscape play areas
- Swings and slides
- Badminton Court
- Jungle gym and slides
- Benches for parents
- CCTV - monitored area



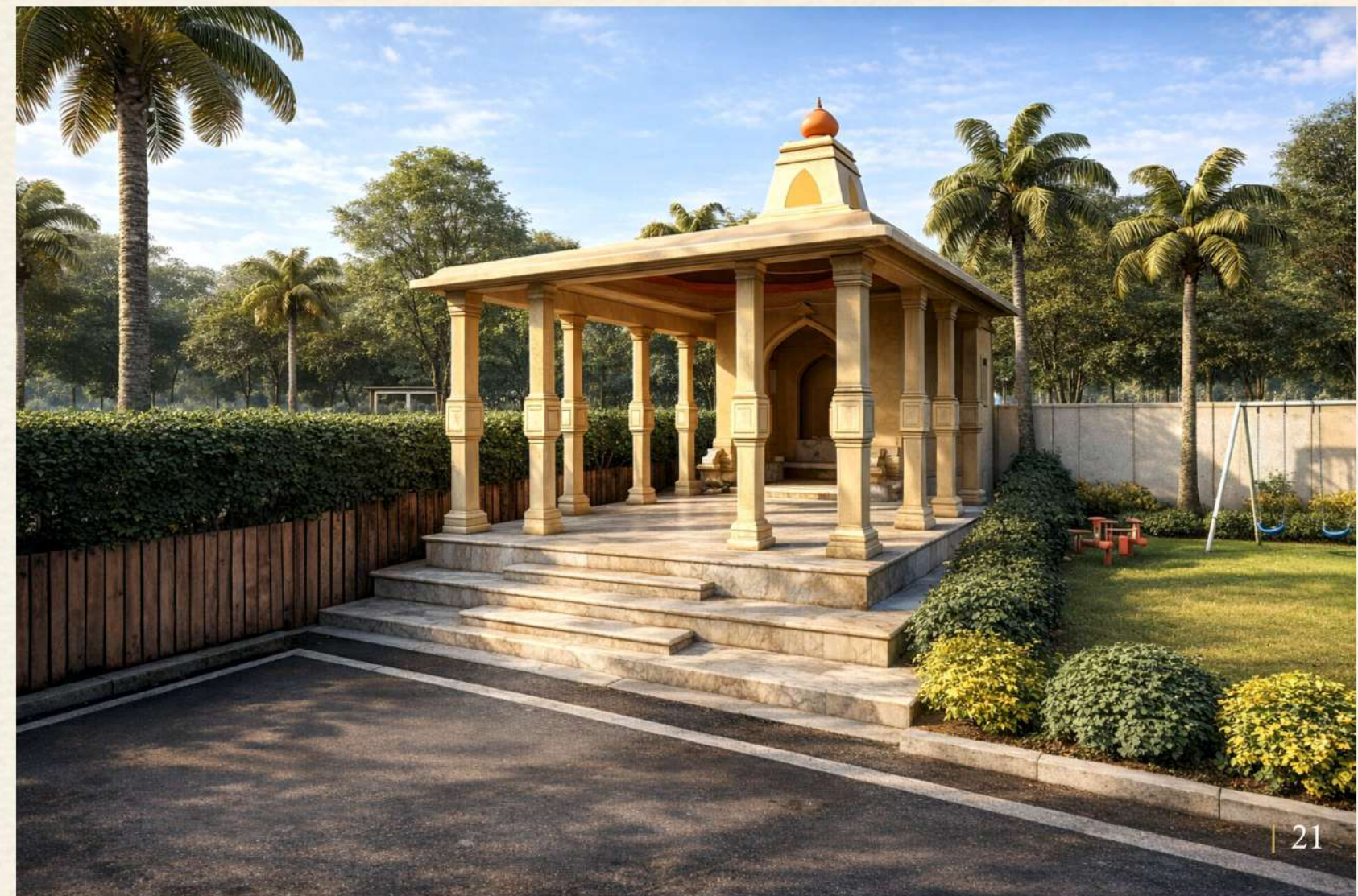


## STATE OF ART AMENITIES

### POOL AREA

- Anti skid Flooring
- Deck shower zones
- Kids splash pool
- Poolside loungers
- Shaded seating
- Mood lighting at night

Refresh. Rewind. Rejuvenate.



## STATE OF ART AMENITIES

### TEMPLE & CLUBHOUSE

Space to Connect & Celebrate

- Temple in Garden Area
- Multipurpose hall
- Modern gym
- Indoor games room
- Yoga and wellness room
- Kids Play area



## KASHI GATEWAYS

### BRIEF SPECIFICATIONS

#### STRUCTURE

Earthquake resistance R.C.C frame structure vetted by IIT BHU

- Steel** - Tata /JSW/ equivalent
- Cement** - Ultratech / ACC / Equivalent
- R.C.C.** - In-house RMC plant for best quality construction.

#### WALL FINISHING

- Living & Dining** - Wall Putty
- Bedroom** - Wall Putty
- External Façade** - Texture/Paint
- Kitchen** - Designer ceramic tiles upto 2'0" height above granite platform
- Toilet** - Designer ceramic tiles upto full height
- Lift & Lobby** - Granite/ Tiles

#### FLOORING

- Living & Dinning** - Glazed Vitrified Tiles
- Master Bedroom** - Glazed Vitrified Tiles
- Other Bedroom** - Glazed Vitrified Tiles
- Kitchen** - Glazed Vitrified Tiles
- Balcony & Toilet** - Anti Skid Ceramic Tiles
- Stairs & Corridor** - Granite/Tiles
- Parking/Driveway** - Paved/Concrete

#### CP FITTING/SANITARY WARE

- Kitchen** - Jaquar/Hindware/Equivalent CP Fittings & Stainless Steel Sink
- Toilet** - Jaquar/Hindware/Equivalent conventional fitting
- Sanitary ware** - Ceramic/Vitreous China of premium quality
- Utility** - Balcony Washing Machine Point provided

#### DOOR & WINDOW

- External Door** - UPVC / Aluminum Sliding (Powder Coated)
- External Window** - UPVC / Aluminum Sliding (Powder Coated)

- Main Door** - Flush door with laminate/Moulded doors
- Internal Door** - Moulded doors

#### ELECTRICAL

*3-Phase supply with concealed wiring & modular switches*

- Drawing/dinning** - AC wiring with AC point
- Bedroom** - AC wiring with AC point
- Kitchen** - Multiple power point for Home appliances & Geyser
- Toilet** - Geyser point
- Utility** - Balcony Power point Washing Machine

#### LIFT

- Passenger Lift (2)** - High-speed passenger lift of reputed brand
- Service Lift (1)** - High-speed Stretcher lift of reputed brand

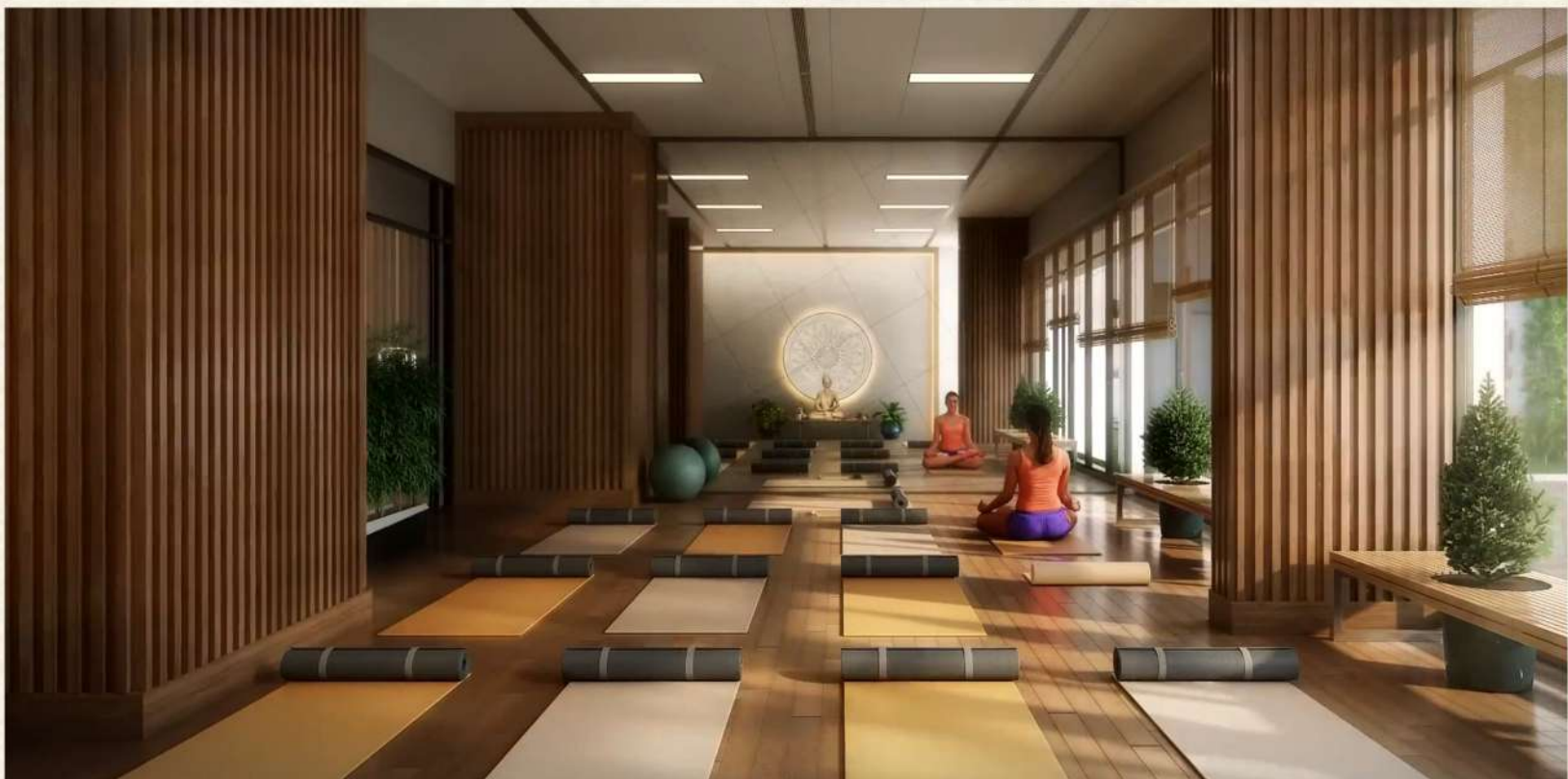
#### RAILING

- Balcony** - Glass railing with SS handrail as per elevation
- Stair** - SS railing





CRAFTING LANDMARKS.  
CREATING LEGACIES.





## KASHI GATEWAYS

### PRIME LOCATION

Kashi Gateways is strategically located on Varanasi to Mughasarai 8 lane Expressway

- Transportation hubs
- Schools
- Shopping centers
- Restaurants
- Entertainment options

#### Distance from key Landmarks

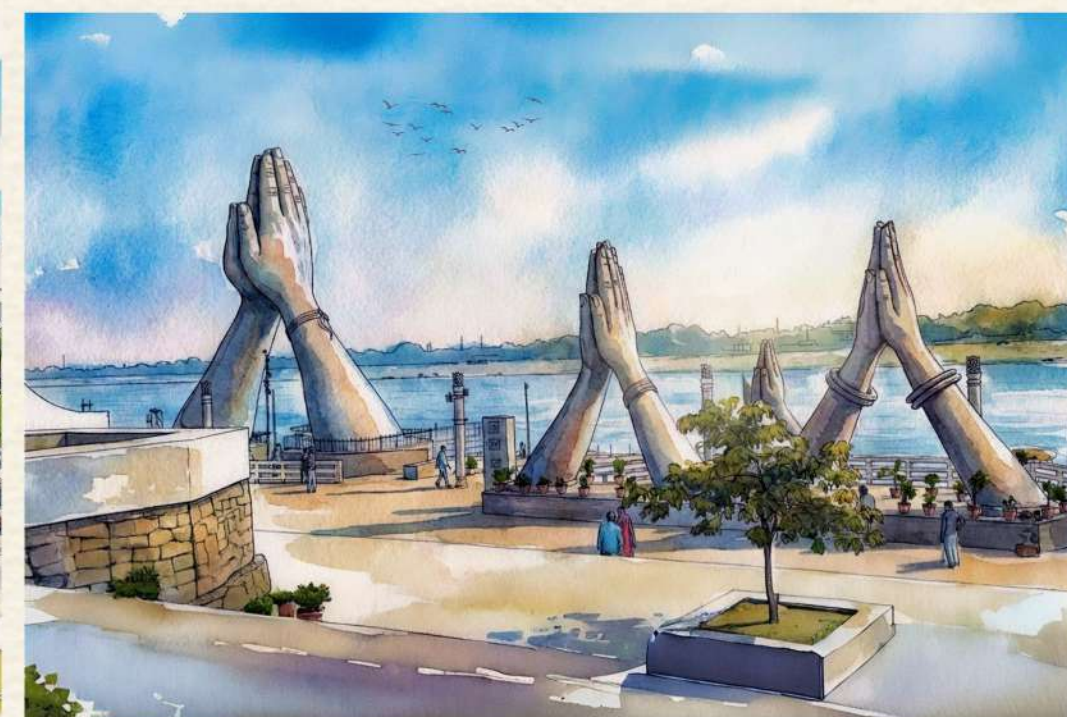
6.0 KM	- New largest Kashi Railway Station
6.0 KM	- 6 lane signature bridge
3.0 KM	- DDU Nagar Railway Station
3.0 KM	- Ring Road
6.0 KM	- World Famous Namoo Ghat
8.0 KM	- Kashi Vishwnath Temple
8.0 KM	- Ramnagar Fort
9.0 KM	- BHU
0.3 KM	- IP Mughalsarai Mall
35 KM	- International Airport



SHRI KASHI VISHWANATH DHAM



LBS INTERNATIONAL AIRPORT



NAMOO GHAT - THE LARGEST RIVER FRONT

For any query please contact

**RG INFRA VENTURES PRIVATE LIMITED**

Registered Address

Araji No. 23, Near IP Cinema, Chandasi,

City : Mughalsarai, District : Chandauli

State : Uttar Pradesh - 232101

Mobile: +91 7233000955 | 7233000956 | 7233000957

Email: rginfra.vns@gmail.com

RERA No.: UPRERAPRJ468361/09/2025

GSTIN: 09AAMCR1622A1ZP

Website RERA: [www.up-rera.in/projects](http://www.up-rera.in/projects)



**CREDAI**



**Disclaimer :** This contains artistic impressions and no warranty is expressly or impliedly given that the completed development will comply in any degree with such artists impressions as depicted. The landscape, water bodies, details of lobbies, features and facilities of the common club/community canteen / any other area, furniture, accessories, paintings, items, electronic goods, fittings/fixtures, decorative, false ceiling including finishing materials, specifications, shades, sizes etc shown in the pictures, are only indicative in nature and for illustrative purpose only and does not form a part of the standard specification. Recipients are advised to apprise themselves of the necessary and relevant information of the project/offer prior to making any purchase decisions. The sale is subject to terms of application form and agreement for sale. All specifications of the unit shall be as per the final agreement between the parties.

The layout plans, building plans, specifications, carpet areas, elevations, and amenities depicted are proposed and subject to revision, modification, and approval by the competent authorities. These do not constitute a legal offer, advertisement, or binding commitment. It is to note that super area as mentioned above is for indicative purposes only.

The block shown as 'B Block / Future Expansion' is not presently sanctioned or approved by RERA and has been depicted solely for indicative purposes to provide a general understanding of the proposed overall development and the manner in which the complete township may appear upon completion.